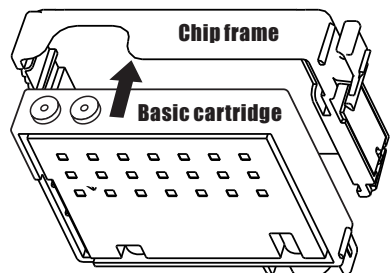


# User manual

## Separable ink cartridge/system EP

### 1 Before installing to printer

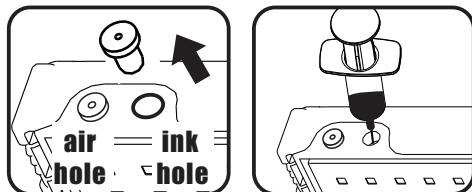
1) Attach basic cartridge into the chip Frame



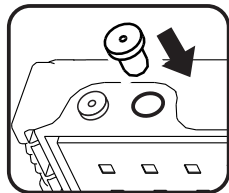
Slowly attached the basic cartridge into chip frame, which make it a complete cartridge ready for use. Make sure the basic cartridge is perfectly position inside the chip frame. Observe the color code of chip frames and basic cartridges.

### Fill or refill the inks

**!** If your cartridges are with the inks , please ignore this step.



Pull the plug from the ink hole.  
Fill with 10ml ink the basic cartridge

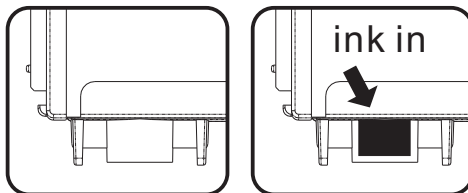


Push the plug back into the ink hole.

The basic cartridge is made with PP material, that can be used for **dye ink, pigment ink, sublimation ink, cleaning fluid**

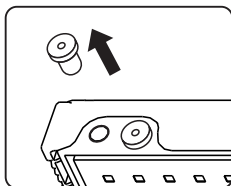
### Shake well the cartridges before installing

Shake at least 4 to 5 times to avoid misprint and uneven printing. Make sure air and ink plug are in place before doing this to avoid ink mess



### 2) Open the air holes

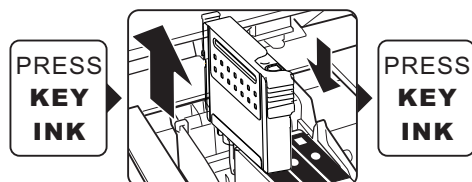
Remove air plug (colorless plug) before installing to printer.



### 2) install the ink cartridge

Install the cartridge like the Original Cartridges.

### 3) reset the ink monitor



If the printer tells you to replace the ink cartridge, please remove and refill the ink cartridge (if need), and reinstall the ink cartridge again.  
For some models , need restart the printer again.

**Touch Chip**

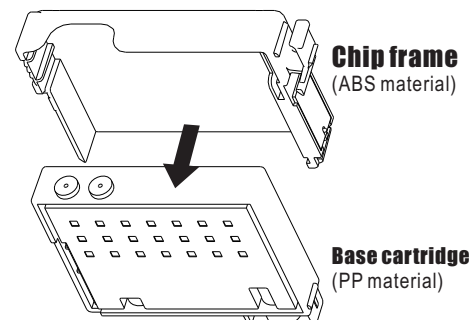
**For The cartridge T124, T125, T127, T128, T130, T132, T133, T135, T138, T140, T141, T142, T143... T157, T159...**

Please use a METAL to TOUCH the 2 circle points of chips. Over one second, reinstall the ink cartridges.

PRESS KEY INK → REMOVE ink cartridge → TOUCH 2 circles → INSTALL ink cartridge → PRESS KEY INK

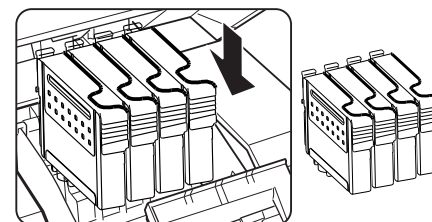
## How to use the chip frame

### Separate the ink cartridges



Separate the base cartridge from the chip frame , now it is ready to make a perfect innovative function of these separable ink cartridges.

### Only install the chip frames



Only Install the chip frames into the printers. The printer thinks them as the ink cartridges, and automatic clean the remainder inks in the print head.

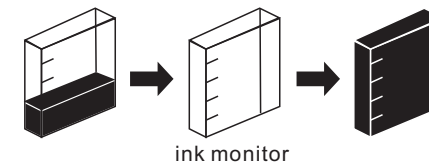
*This way do not damage the print head . This way makes the print head without any inks, it can **store the printer for long time** , and **no longer blocked the print head** .*

After you use this step, at next time you want print, please reinstall the ink cartridges, then clean the print head for 2-3 times by the printer software

If you change to different brands or styles of ink, we recommend you do this step.

## 4 FAQ

Question 1: What is the RESETTABLE CHIP?



Answer 1:

RESETTABLE -CHIP (ARC, auto-reset-chip) it can reset the date of chip to the start status, and the ink monitor will return to full-ink status.

Question 2: Can this ink cartridge be mixed original ink cartridges to use together ? And mix the other compatible ink cartridges?

Answer 2:

Yes , it can. You can mix our ink cartridge with other brands of ink cartridges to use together.

Question 3: Some time it happens the printing short lines, it is the ink or cartridge quality?

Answer 3:

No ! Printing short lines is the normal thing at the inkjet printers. Using any ink cartridges including the original ink cartridges will happen the printing short lines. So there is the function 'clean the print head' in the software driver, for each inkjet printer.

*If you like to change the type of ink from dye to pigment ink, wash your ink tank first. It is highly recommended to use new ink tank in changing the type of inks you are using.*



Please do not touch the ink any time. If you have touched , please don't worry about skin healthy, the inks are safe to touch.



**CAUTION**



Please do not touch the chips, if touch it maybe damage the chips and can not quality warranty